

# Jacob Gulezian

Registered Architect, PA  
NCARB

New York, NY

m 240.688.1450

e [Jacob.Gulezian@gmail.com](mailto:Jacob.Gulezian@gmail.com)

w [jacobgulezian.wixsite.com/portfolio](http://jacobgulezian.wixsite.com/portfolio)

## Experience

**Cecil Baker + Partners**, Staff Architect; Philadelphia, PA. 2014-2018

BIM modeling, documentation, detailing, and design

Work in all stages of design process: Zoning analysis, Schematic Design, Design Development, Construction Documents, and Construction Administration.

**The Lighting Practice**, Lighting Designer; Philadelphia, PA. 2013-2014

Working as consultant to architects spec-ing, rendering, calculating, and coordinating lighting fixtures on a variety of large-scale institutional projects

## Education

**Free School of Architecture**; Los Angeles, CA – Participant.

**Drexel University**; Philadelphia, PA – **B.Arch** + French Minor.

1st Prize Gold Medal Michael Pearson Prize

for Thesis project: Areni Vinicultural Center

Wilson Award for Research

for 'History of Armenia and Its Architecture'

Multiple Deans Awards Recipient

A.J. Drexel Scholarship Recipient

**Washington International School**; DC – Bilingual IB Diploma.

## Skills

AutoCAD	●●●●●
Revit	●●●●●
Illustrator	●●●●●
Photoshop	●●●
InDesign	●●●●●
SketchUp	●●●●
Rhino + Grasshopper	●●

## References

Available upon request

# Jacob Gulezian, RA

cv of professional work, 2013-2018

## Office

**Cecil Baker + Partners**, Staff Architect; Philadelphia, PA – 2014-2018

BIM modeling, documentation, renderings, and design of luxury and subsidized residences, institutional buildings, masterplanning, and zoning studies

## Projects

**500 Walnut**, Philadelphia, PA - 2014-2018

Phases : SD, DD, CD, CA

Ultra luxury multi-story condominium

Role included modeling and detailing in Revit, documentation at every stage, contact with design principal, client, consultants, and contractor. CA experience reviewing submittals, working on-site with contractor, punch-listing, responding to RFIs, creation of Bulletins...

**23rd + Cherry st Townhomes**, Philadelphia, PA - 2017-2018

Phases : Zoning, SD, DD, CD

16 luxury townhomes

Modeled, documented, and detailed in Revit working closely with design principal, client, and consultants to refine luxury building interior and exterior for construction

**OneRiverside**, Philadelphia, PA - 2014-2017

Phases : DD, CD, CA

Luxury multi-story condominium

Assisted with design documentation and construction documents. Aided with unit layout coordination, submittal review, and RFI responses during construction

**19th + Chestnut**, Philadelphia, PA - 2017

Phases : Zoning Analysis, SD

**2100 Hamilton**, Philadelphia, PA - 2017-2018

Phases : Zoning, SD, DD

**Jefferson University Library + Accelerator Zone**, Philadelphia, PA - 2015-2017

Phases : Zoning, SD, DD, CD

**4th + Callowhill**, Philadelphia, PA - 2015

Phases : Zoning, SD

**Chesterman Apartments**, Philadelphia, PA - 2014-2015

Phases : SD, DD, CD, CA

Renovation of an old factory to house market-rate apartments

## Office

**The Lighting Practice**, Lighting Designer; Philadelphia, PA – 2013-2014

Spec-ing, rendering, and coordinating lighting on large-scale projects

## Projects

**Adelphi University**, NY - 2013

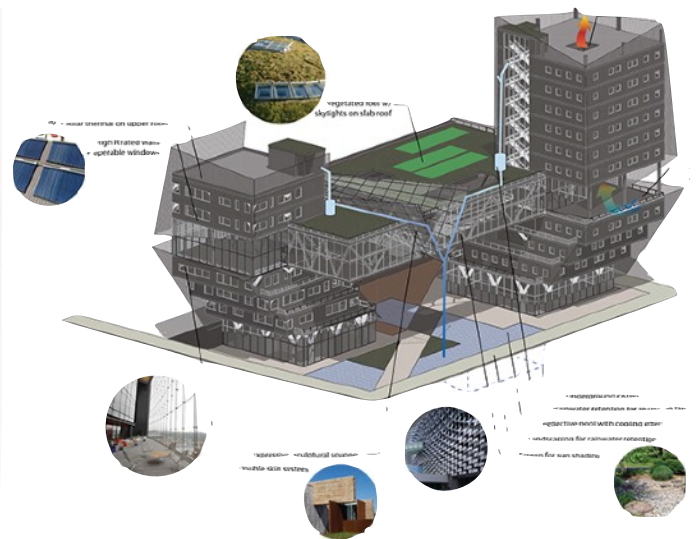
Consultant for Ballinger Architects

**Empire State Building**, NY - 2013

**New Residence Hall**, Bryn Mawr College, PA - 2013

Consultant for Atkin Olshin Schade Architects

**Perelman Plaza**, Drexel University, PA - 2013





# Jacob Gulezian, RA

## selected work samples

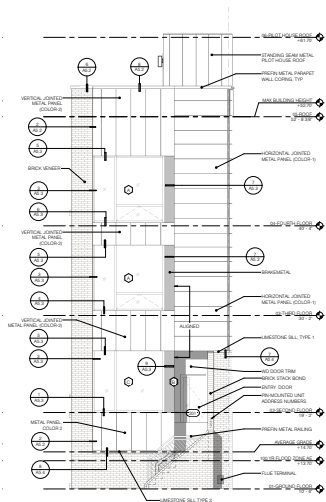
### Professional Work



### 500 Walnut; Philadelphia, PA - 2014-2018

Completed, 27 Stories, 179,000 Gross SF

Ultra-luxury condominium tower overlooking Independence Hall. The project includes 30 residential condominiums with amenities including two levels of automated parking below grade. The building design at this site is uncomplicated, responding to the scale and rhythms of the neighboring Penn Mutual Tower, and honoring the venerable site of the birthplace of our nation by maintaining open sky framing the cupola of Independence Hall when viewed from the Liberty Bell. These sight-lines effectively slice the northern end of 500 Walnut revealing a 27 story glassy façade facing Independence Park.



### 23rd + Cherry st Townhomes; Philadelphia, PA

In Progress, 16 4-Story Townhomes, 3,100 SF

Luxury townhome community in Center City Philadelphia.



### 19th + Chestnut; Philadelphia, PA

Zoning study

Design consultant for studying zoning, massing and materiality negotiating between neighborhood stakeholders, developer, and the city.

